

# Captured Moments: One Last Look



courtesy D McCormick

*Don McCormick (1928-2002) feeding pet lamb*



courtesy D McCormick

*Children playing*



courtesy H Van den Heuvel

*Handshake: This photo recalls a time when many deals were formalized simply by a handshake.*

*by Paul Janes*

**I**t is appropriate that we end this book with a selection of photos from across Warwick Township, because that is where the idea for the book started.

Digital copies of over 5,000 photos of the township were collected for this project. These images will be in the Warwick Township Archives at the Lambton Room in Wyoming once the printed part of the project is completed.



*School girls looking at the boys*

courtesy Watford Historical Society



*Knox Presbyterian Church picnic at Kettle Point 1918: Picnics such as these were an all day affair because of the considerable distance in buggies.*

courtesy H Ross





courtesy Watford Historical Society

*School boys looking at the girls*



courtesy W Dunlop

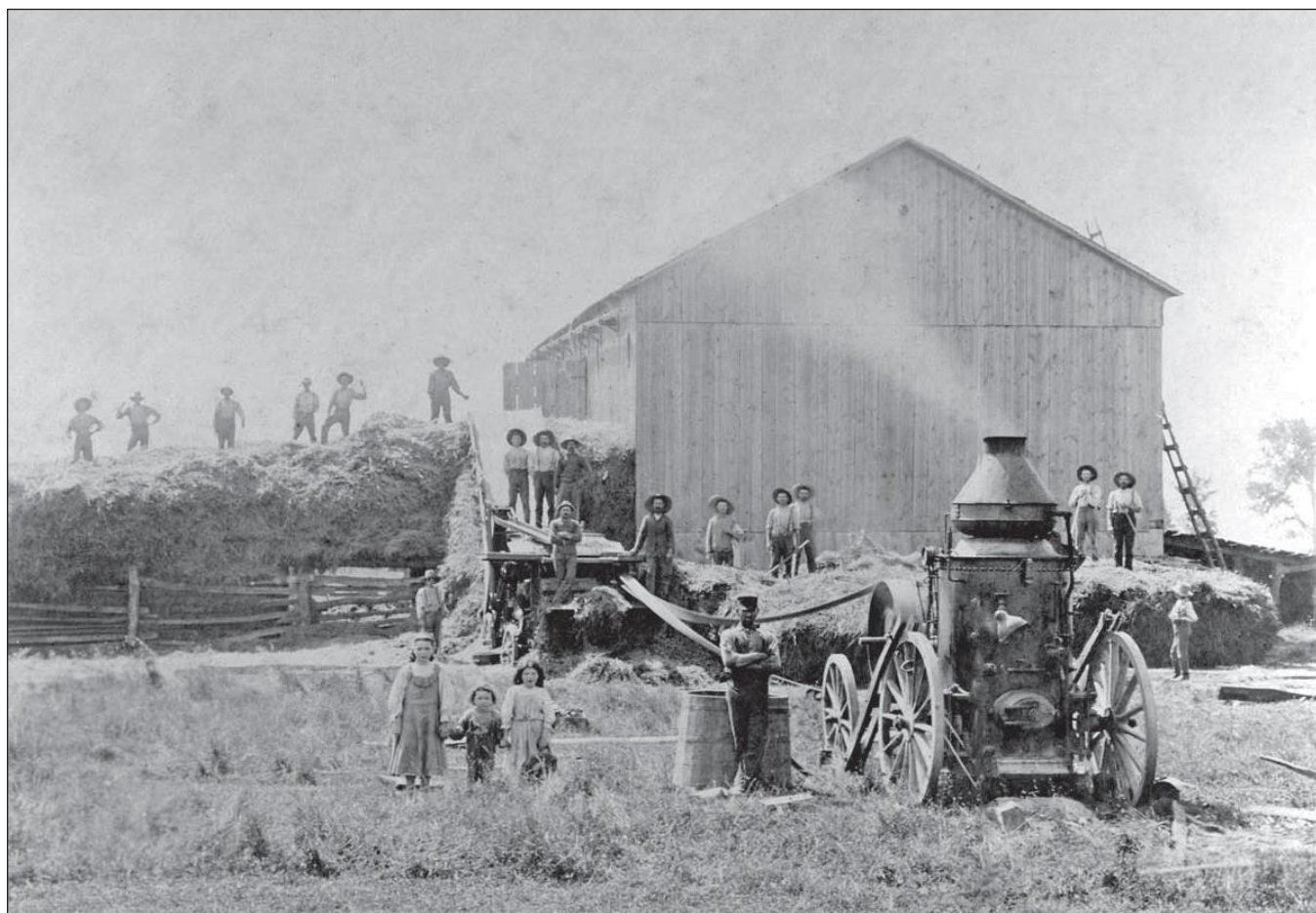
*George Holmes family c. 1910. Will Holmes, whose paintings celebrated this part of Lambton County, is at the right.*





courtesy S McKay

*Jack Sparling at harvest time*



courtesy Watford Historical Society

*Threshing at Kelly's August 28, 1897*



courtesy J Sayers

*Kingscourt Junction between Watford and Wanstead, on the Great Western (Grand Trunk) Railway. Salt from the Elarton Salt Works was brought to this junction by tram.*



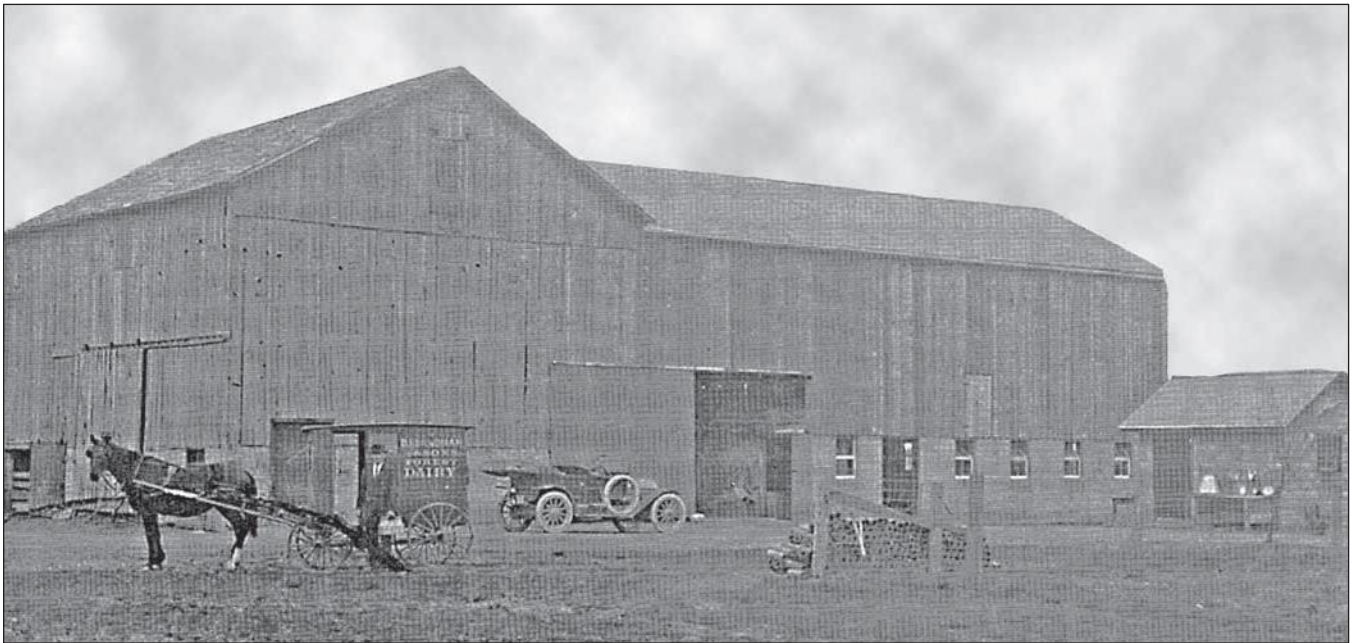
courtesy Watford Historical Society

*Watford train stations, old and new. Both are now removed.*





*Moving the Manders' home from the Morris farm, in southern Warwick Twp. c. 1920*



*Stanley Kernohan farm, with Forest Dairy wagon in front*





courtesy D McCordic

*John Kingston doing farm chores*



courtesy H Ross

*Bob Laws and Jessie Cameron at well*



courtesy R Vaughan

*Hiram and Frank Kinsey*





courtesy C Searson

*Rundie and Stevens General Blacksmithing, Watford*



courtesy C Searson

*Rundie and Stevens General Blacksmithing, detail*





courtesy R Bork

*Children at play*



courtesy D McCormick

*F. H. Bayley Bread Wagon: Wagons such as these made deliveries of bread or milk.*





courtesy L Hall



courtesy L Hall

Gasoline Ration Book Cover 1945-46. Ration books for many items, including gasoline, meat, butter, sugar, tea and coffee, were used during World War II and shortly after to preserve necessities for the troops.

Gasoline Ration Book Coupons



courtesy G Rombouts

Rombouts family coming from Holland to Canada on Empress of France February, 1952



courtesy M Kenchan family



*Ella Mabel Wall, daughter of Christopher and Sarah Jane Wall*

courtesy L McGregor



*Joseph and Annie (Stewart) Goodhill*

courtesy D Tiedje



*Jonathan Coupland house near Wire Works, Watford: This house was the residence of the T. B. Taylor family. T.B.'s photographs are prized possessions in many families.*





courtesy M Whiting

Joseph Scott family: Back row: Sarah (Scott) Bolton, Sam Scott, Walter Scott, Ella (Scott) Macklin, Front row: Bell (Scott) Macklin, Joseph Scott, Janet (Thompson) Scott, Margaret (Scott) Wyatt, c. 1890



courtesy D Boyd

Horses in harness: Work horses were the main source of power on farms until the coming of the tractor in the 1940s.





courtesy Watford Guide-Advocate

Men on boardwalk in front of Guide-Advocate Printing Office: The Rogers Hotel is on the far left.



courtesy Watford Historical Society

Front St., Watford





courtesy H Ross

*Helen Ross and Elizabeth (Ross) Harris stooking grain*



courtesy D Boyd

*Doug Boyd stooking wheat: Doug has continued to use old time harvesting methods on part of his farm until recently, to show the current generation how it used to be; early 2000s*



courtesy L McGregor



Rachel (Mathews) Ellerker (1839-1899) with her mother Rebekah (Mrs. Parmenas Mathews, -1870)



Liddle Robson portrait

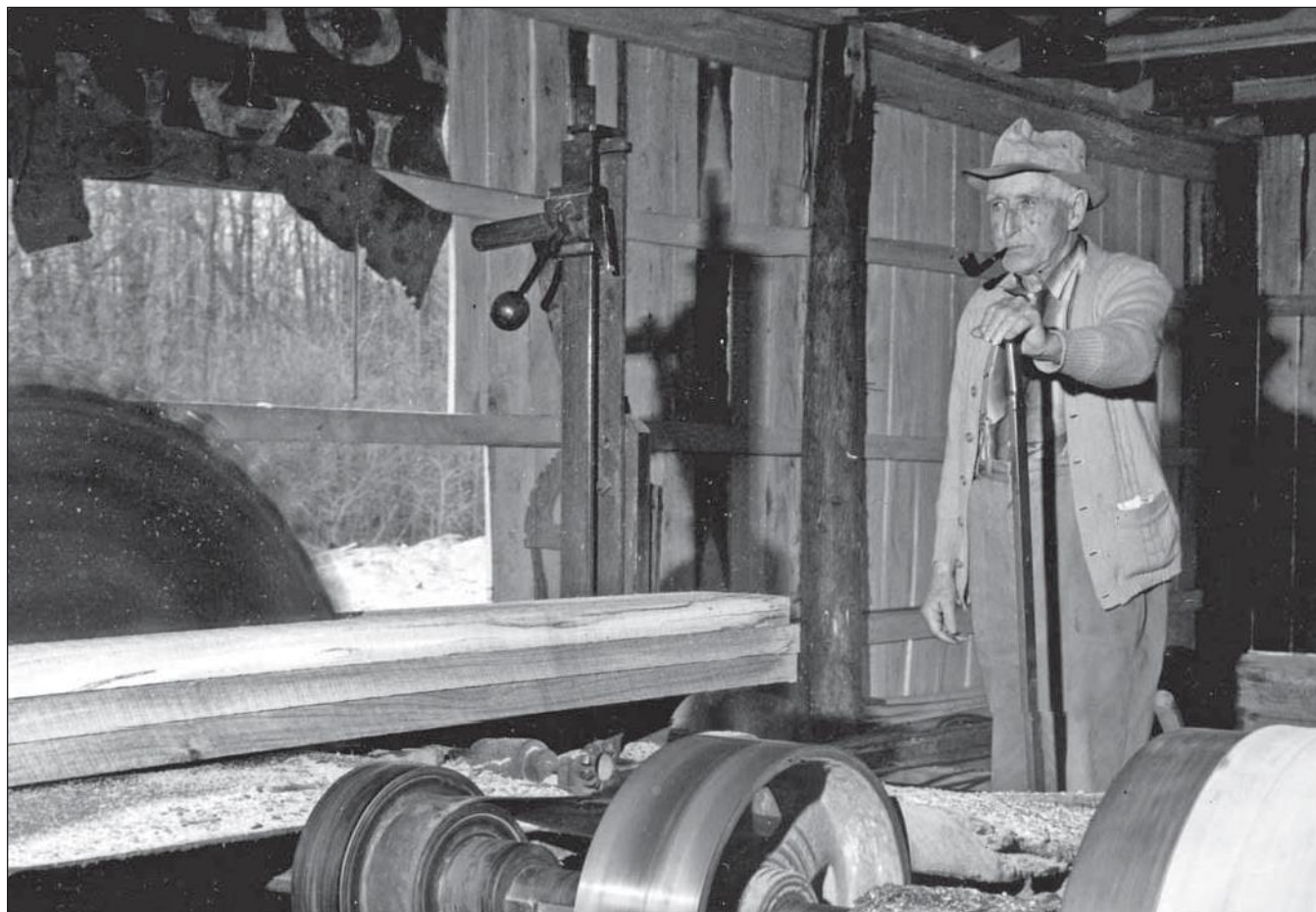
courtesy M Kenchan family



Watford Council meeting upstairs in the old Fire Hall

courtesy Watford Historical Society





courtesy G McEwen

William Leslie McKay in his Warwick Village sawmill, about 1960

**WILLIAMSON'S**  
—FOR—  
Cheap Dry Goods & Groceries

---

FULL LINE OF  
**Crockery**

LARGE STOCK OF  
**Glassware**


---

If you require anything in the  
above lines Williamson  
can save you money.

Butter and Eggs wanted.

courtesy L McGregor

Williamson's Dry Goods advertisement, Watford 1890

66 COUNTY OF LAMTON  
FARMING  IMPLEMENTS  
MANUFACTORY.

THE UNDERSIGNED MANUFACTURES  
PLOUGHS, HARROWS,  
Cradles, Waggons and Sleighs.

**BLACKSMITHING**  
DONE ON SHORTEST NOTICE.

Cradle Fingers made from Natural Bends, and  
all Work warranted.

**JOHN HAWKES,**  
EGREMONT STREET, WARWICK.

---

**WARWICK HOTEL**  
D. ROGERS,  
Manager and Proprietor.

This is a large two story brick building kept in first-class style. Travellers  
will here find the best of accommodations in Board, Livery and Stabling.

GAZETTEER 1864-65

courtesy L McGregor

Advertisements of Warwick businesses in  
1864-5 Lambton Gazetteer





courtesy D Shannon

Forest Junior Boys Band 1931: Band Master Cy Freele



courtesy M Hollingsworth

Arkona entertainment: Local theatrical productions were a common part of the rural community's social life. L to R: Tom Woolvett, Barry Chamberlain, Fred Baxter, Bob Dowding, Ross Edlington, Johnny Campbell





courtesy G Richardson

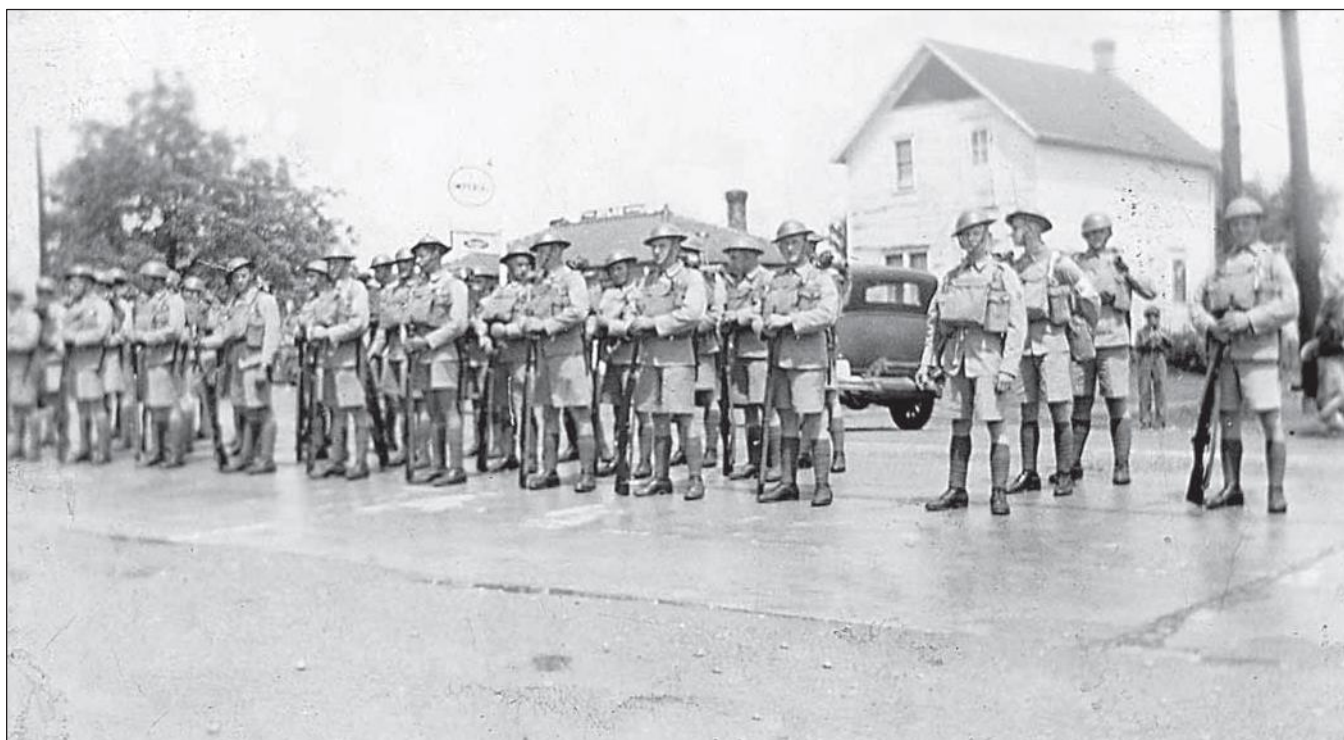
*Watford United Church Junior Choir 1960s*



courtesy G Richardson

*St. Andrews United Church Women on Easter Sunday 1961, Watford: At one time aprons were common attire when working in the kitchen. L to R: Ethel Watson, Myrta Ross, Alma McKercher, Mae Sweet, Ila Winter, Mable McNaughton, Jean Duncan*





courtesy J Dunlop

*Military in Warwick Village*



courtesy D Boyd

*Kris Boyd with United Nations Peace Keeping Forces in Bosnia, 1994: Kris is front left.*





courtesy Watford Historical Society

Laying the cornerstone for the Watford Drill Hall, 1913



courtesy Watford Historical Society

Shipping apples from the north side of the railroad tracks (where City Service Oil and Watford Roof Truss were located in 1996); R. C. McLeay Lumber and Coal Co., Watford in background





courtesy C Searson

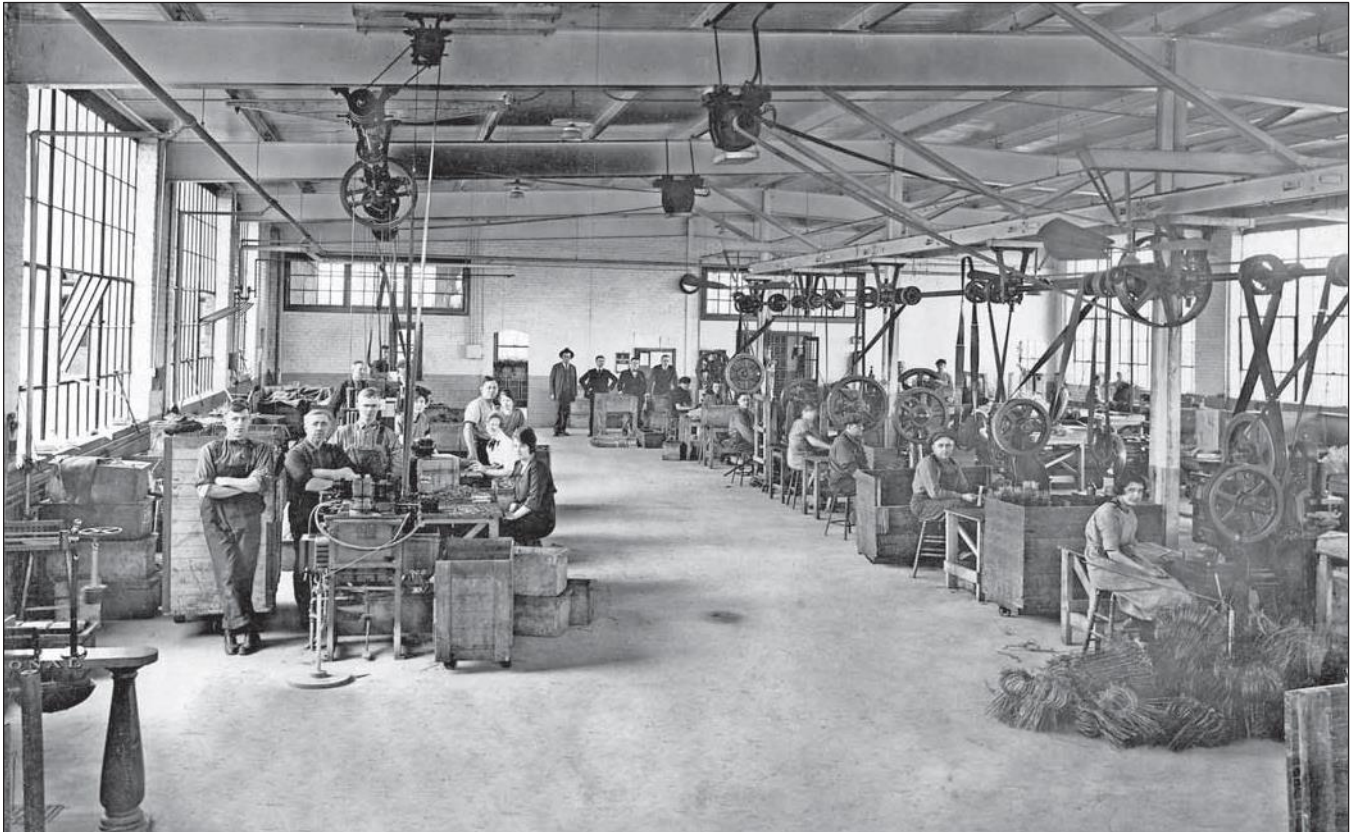
*Searson sawmill and home, Watford 1957. This sawmill is still in operation in 2008, using equipment dating back to 1875.*



courtesy Watford Historical Society

*Fabricating plant, Watford*





courtesy Watford Historical Society

Wire Works Watford: Roy Hollingsworth front left, next Bob Caley, front right Lulu Lewis



courtesy J Dunlop

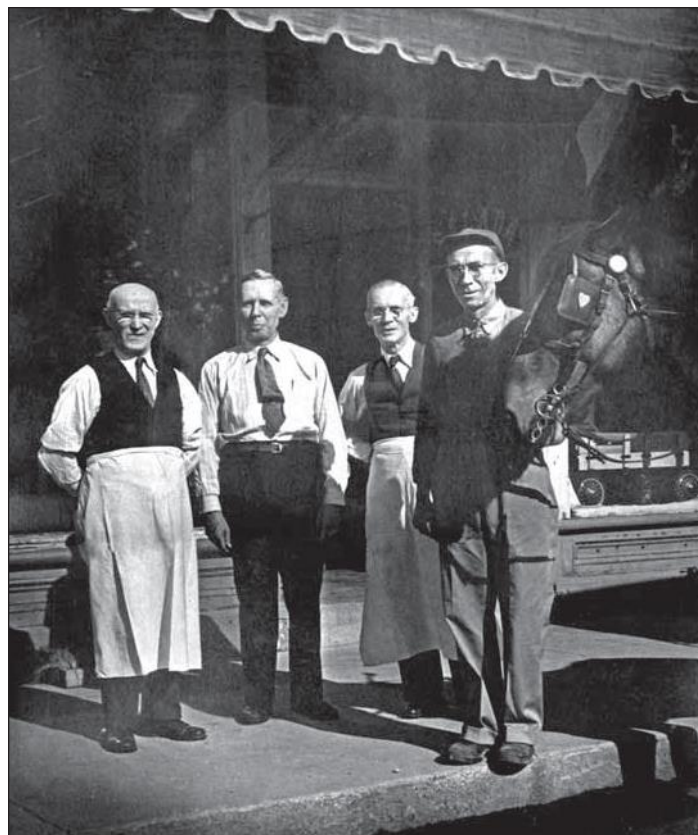
Men beside cabins at Warwick gas station: On a lazy summer afternoon men "split a brick" of ice cream (beside Tim Barnes' chair) as they talk. A common custom in years past, a brick of ice cream was cut in half, with two spoons provided. After the ice cream was eaten, the spoons were returned to the store. L to R: Alf Smith, Tim Barnes (in chair), Lloyd Smith, Davey Main, John Smith (in chair), Ivor (Oscar) Blunt, George Atkinson, Clayton Stewart, Frank Dolan (in chair)



courtesy R Vaughan



Franklin Kinsey Barnes seated at far right in London, Ontario 1917



In front of the Carroll Thompson store, Watford: John Gault, Ed Carroll, Manfred Thompson with E. C. (Clair) Lambert ready to deliver groceries

courtesy Watford Historical Society



Robert Lupton in his Buick , 1913

courtesy Watford Historical Society





courtesy F Jamieson

*F. W. Hall Feed Store in the former Pearce's store, corner of Main and King St., Forest*



